



Poster Review (Aug 15-16)

(Steve Kent)

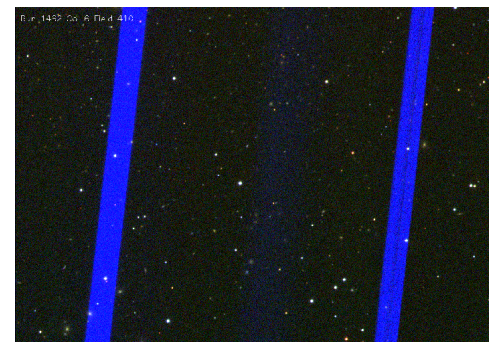
- **Extended Coffee Hour & Poster Viewing 3:30-4:30**
- **NOTE: Posters will come down at the end of today.**



O'Hare Meetings

Tentative Agenda Fiber Telescope Group 6 - 7 September, 1988 O'Hare Hilton

1. **Ratify boundaries for discussion:** how to enable a dedicated wide-field telescope for large-scale structure studies that will yield at least 10 to 100 times more redshifts than existing surveys in a reasonable amount of time. How to provide a finding list of objects for this telescope.





Minutes

Minutes Fiber Telescope Group Meeting, O'Hare Airport 6 - 7 September 1988

The meeting convened shortly after 1:00 p.m. at the Hilton. Present were York, Burg, Shaya, Davies, Kibblewhite, Osmer, Margon, Tyson, Kent, Gunn, Koo, McGraw, and Kron, who chaired the meeting. Harper arrived later. The agenda (attached) was followed in content, but not strictly chronologically.

1. Five of original thirteen attendees are still on the project!
2. Harper still arrives late.





Poster categories

- **30 Posters Total**
- **Science**
 - **Galaxy properties and formation**
 - **Quasar/AGN science**
 - **Milky Way**
 - **Stars**
- **How is SDSS used?**
 - **“Survey science”**
 - **Multi-survey (ROSAT, FIRST, etc)**
 - **Multi-telescope (HST, etc)**
 - **Confrontation with Theory**



- **Which SDSS data?**
 - **Spectroscopic catalog**
 - **Photometric catalog**
 - **Catalog v. Pixel data**



Galaxy properties and formation

Multi-survey	Brown, Michael J. I.	The past 7 Gyr of Red Galaxy Growth
Multi-survey	Lin, Yen-Ting	Statistical Properties of Radio Galaxies in the Local Universe
Multi-survey	Parejko, John K.	X-ray Emitting Galaxies in the SDSS
Multi-Tel	Chen, Chin-Wei	Homogeneous ugriz Photometry for ACS Virgo Cluster Survey Galaxies
Multi-Tel	Herbert-Fort, Stephane	The Orbital Distribution of Satellite Galaxies
Multi-Tel	Hwang, Ho Seong	Kinematics of Satellite Galaxy Systems
Multi-Tel	Lee, Yun Hee	The central offset of nearby galaxies
Survey Science	An, Deokkeun	Galactic Globular and Open Clusters in SDSS: Crowded Field Photometry and Cluster Fiducial Sequences in ugriz
Survey Science	Bizyaev, Dmitry	Dust-free structural parameters of edge-on galaxies in SDSS
Survey Science	Herrera, Rodrigo I.	Star Formation in Pairs of Low Surface Brightness Galaxies
Survey Science	Patiri, S.	The properties of galaxies in voids
Survey Science	Peeples, Molly S.	Outliers from the Mass--Metallicity Relation
Survey Science	Vazquez, Jose Antonio	A New Catalogue of Isolated Galaxies from SDSS
Theory	Gonzalez, J.	Using the Sloan Digital Sky Survey to test galaxy formation models



Quasars/AGN

Multi-survey	Lopez, Sebastian	Probing cluster galaxies with background QSOs
Multi-Tel	Aoki, K.	Search for Balmer absorption lines in FeLoBAL quasars
Multi-Tel	Gupta, Neeraj	GMRT survey of 21cm absorption in intermediate redshift DLA candidates from SDSS
Multi-Tel	Herbert-Fort, Stephane	The SDSS DLA Survey and Metal-Strong DLAs
Survey Science	Reyes, Reinabelle	Space density of optically-selected type 2 quasars
Survey Science	Winkler, Hartmut	Seyfert galaxies with hyper-strong coronal emission lines (and other oddities discovered by SDSS)
Theory	Bell, Byron E.	Data analysis of multi-wavelength magnitudes the SDSS-DR3 using a AutoRegressive Conditional Heteroskedasticity (ARCH) process
Theory	Tanaka, Takamitsu	Assembly Models for Redshift 6 Sloan Quasar Black Holes



Milky Way/Galactic Structure

Other Survey

Deng, L.

LAMOST Galactic structure survey

Survey Science

Carolla, D.

Structural and kinematic parameters of the two halo components of the Milk Way: preliminary results

Survey Science

Sesar, Branimir

Milky Way halo substructures in the SDSS

Theory

Orban, C.

Delving Deeper into the Tumultuous Lives of Galactic Dwarfs: Modeling Star Formation Histories



Stars

Survey Science
Survey Science
Survey Science

Johnson, Jennifer

M Giants in the Galactic Halo from SDSS

Lee, Y. S.

Alpha/Fe Patterns in Halo Stars

Schlesinger, Katharine J
Understanding Early Star Formation using Metal-Poor Stars and SEGUE